



LIGHTS UP YOUR WORKSITE!



PIPE G2 IP66

3600 lm with only 24 W
50 000 h lifespan
5000 K



Lightweight and strong structure

THE BEST LED WORKSITE LIGHT FOR DEMANDING CONDITIONS !

- ◆ Powerful
- ◆ Lightweight
- ◆ Agile
- ◆ Energy efficient
- ◆ Durable

The bright LED module produces flicker-free light with high CRI maximizing the light output

360° beam angle



All components available as spare parts



Low surface temperature



Available also as 24 or 42 VAC SAFETY -versions!

Polycarbonate tube with a changeable polyester coverfilm

Separate LED driver designed to withstand 4kV surge peaks.



IP66 Shock absorbing end caps

10 m cable H07RN-F

16A socket for chaining lamps



Several ways for mounting and 2x300 N magnet as an option

Visit our website @ www.megalightsystems.com



IP



10m H07RN-F



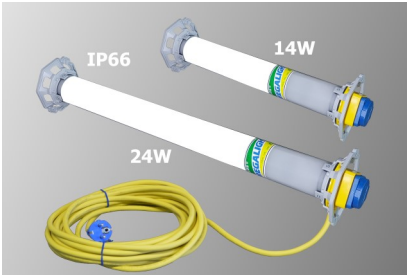
-15°C



MADE IN FINLAND

LED 360° PIPE G2 IP 66 230VAC DATA

230 VAC operating voltage
 IP 44
 CABLE: 10m 3x1,5mm² H07RN-F



Power	Lumen	CCT (K)	L (mm)	Ø (mm)	Weight (kg)
14W	1800	5000	430	60 / 130	2,1
24W	3600	5000	650	60/130	2,2

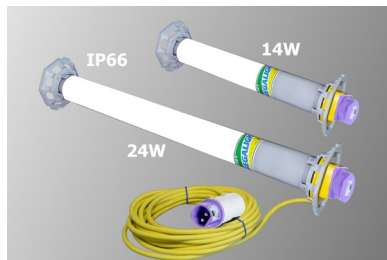
230 VAC PLUGS AND SOCKETS



LED 360° PIPE G2 IP66 SAFETY 24VAC AND 42VAC DATA



24 or 42 VAC SAFETY EXTRA LOW VOLTAGE
 IP 44
 CABLE: 10m 2x1,5mm² H07RN-F cable



24VAC:

Power	Lumen	CCT (K)	L (mm)	Ø (mm)	Weight (kg)
14W	1800	5000	400	60 / 130	2,1
24W	3600	5000	630	60/130	2,2

42VAC:

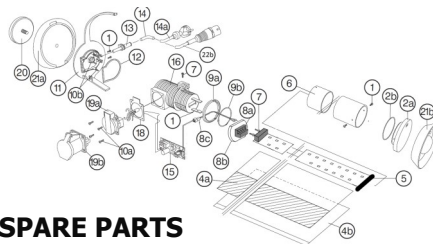
Power	Lumen	CCT (K)	L (mm)	Ø (mm)	Weight (kg)
14W	1800	5000	400	60 / 130	2,1
24W	3600	5000	630	60/130	2,2



ACCESSORIES AND SPARE PARTS



MAGNET HOLDER



SPARE PARTS

SAFETY TRANSFORMERS



24-42VAC
 100-350VA

